



**A-Z MEP LLC**  
Company Profile  
September 2023



**NOTHING IS IMPOSSIBLE**  
AZ-PQ-EAI-R5-22

Key Contact



Essam Ismail  
General Manger  
Essam.ismail@azmep-qa.com







A-Z MEP LLC

## Contents

- About Us
- Scope of Activity
- Services
- Organization Chart
- Project Reference
- Project Gallery
- Certifications
- Company Policy



A-Z MEP LLC

## About Us

### Company Background

#### AZMEP In Brief

- Licenced in Qatar
- Licenced in KSA
- Major Projects Experience
- Highly motivated team of engineers with long track records in GCC.

A-Z MEP was established by forming a highly motivated team of engineers and support staff with long track records in Qatar.

We've successfully managed projects in the residential, commercial, hospitality, recreational, and healthcare sectors across Ireland and Middle east. These projects range from small to large residential and commercial conversion, refurbishment and new builds to multistage projects.



Our team consists of Project Managers, Quantity Surveyors, Principal Designers and Health and Safety Auditors with members who have more than 25 years experience in the construction industry.



Our Vision is to be the leading provider of integrated Project Management services for small to medium size construction projects.



Our Mission is to be at the forefront of providing value-added construction services to our customers by creating a successful partnership leveraging on our operational efficiencies, people and leading technologies.



Our Pledge is to establish lasting relationships with our customers by exceeding their expectation through exceptional performance by each member of our team.





## Scope of Activity





## Scope of Activity

### AZMEP LLC SCOPE OF WORKS:

- Project Management
- Construction Management
- Commissioning Management - SIBS
- Cost Management
- Engineering Services for Event and Exhibition
- Power Construction – Pegasus

## Project Management

Prior projects execution AZ-MEP's Teams are identified upon specific needs and coordinated by a Project Manager, who is responsible for managing the entire project from initiation to completion, ensuring achievement of quality, time and cost objectives.

AZ-MEP's Engineering tackles complex and challenging projects supporting the client with Project and Construction Management, offering a strategic management with principles, techniques, and tools to be used for project planning, control, monitoring and review. The experience in similar projects ensures to the Client deadline, cost and performance requirements achievement.

## Scope of Activity

### AZMEP LLC SCOPE OF WORKS:

- Project Management
- Construction Management
- Commissioning Management - SIBS
- Cost Management
- Engineering Services for Event and Exhibition
- Power Construction – Pegasus

## Construction Management

AZ-MEP's Construction Management service gives you security from a single source. We assume full responsibility for the execution of your construction project. We have successfully completed a large number of projects using this approach.

With Construction Management, we combine project management, planning services and construction management into an overall package.

With Lean Construction Management, we ensure seamless planning and execution processes. Using GCM in combination with our BIM management service, extremely cost-efficient planning and execution processes can be realized in a short space of time.



## Scope of Activity

### AZMEP LLC SCOPE OF WORKS:

- Project Management
- Construction Management
- Commissioning Management - SIBS
- Cost Management
- Engineering Services for Event and Exhibition
- Power Construction – Pegasus

## Commissioning Management - SIBS

Commissioning Management, when integrated with the design team, helps to prevent errors during construction which otherwise lead to incorrect operation and over budget running costs. Specialist Independent Building Services experienced Management team and Engineers work to internationally recognized commissioning standards and regimes that have stood the test of time.

We have developed and established a successful commissioning and testing management process (ISTO) through extensive experience in a wide variety of building projects including high-rise residential, commercial offices, shopping malls, hotels, and hospitals that address the need to plan, manage, witness, verify and close-out projects.

## Scope of Activity

### AZMEP LLC SCOPE OF WORKS:

- Project Management
- Construction Management
- Commissioning Management - SIBS
- Cost Management
- Engineering Services for Event and Exhibition
- Power Construction – Pegasus

## Cost Management

AZ-MEP's cost management services provide specialized expertise across project life cycles to reduce client risk, improve value and deliver positive outcomes in all sectors of the built environment.

We align ourselves around client sectors to provide industry-relevant advice and specialized expertise. Our integrated approach creates custom-made client teams that bring together technical delivery experts, strategists and other in-house specialists. We work together to achieve viable developments that capture client objectives through value-driven and efficient designs. Costs are controlled through rigorous change management and risk-management processes and reporting



## Scope of Activity

### AZMEP LLC SCOPE OF WORKS:

- Project Management
- Construction Management
- Commissioning Management - SIBS
- Cost Management
- Engineering Services for Event and Exhibition
- Power Construction – Pegasus

## Engineering Services for Event and Exhibition

AZ-MEP provides a complete range of Electromechanical & Engineering Services required for events and exhibitions, we propose the latest technology, delivery and products to provide the best solution in temporary power and cooling.

AZ-MEP's in-house Event Management Division provides cross-disciplinary experience with the necessary know-how that has competitive advantage and results in fast-track project.

### Event Services:

Power Services	Cooling Services
Lighting Services	Lighting Controls Services
Audio & Video Services	Plumbing Services
Drainage Services	Fire Protection Service

## Scope of Activity

### AZMEP LLC SCOPE OF WORKS:

- Project Management
- Construction Management
- Commissioning Management - SIBS
- Cost Management
- Engineering Services for Event and Exhibition
- Power Construction – Pegasus

## Power Construction - Pegasus

We provide a wide range of technical services delivered by an experienced team of professionals to continuously provide the customer solution with a focus on quality and excellence which includes,

- LV, MV & HV Switchgear Installation upto 33 KV
- Testing & Commissioning of switchgears upto 33 KV
- Retrofitting and Refurbishment of switchgears
- Transformer Installation, Oil filtration, Testing & Maintenance
- Thermography / Thermal imaging
- LT/HT Cable Laying, Jointing & Termination works up to 33 KV
- Cable fault locating
- Lightning protection & Earthing system works
- Power quality studies & Harmonic analysis
- Generator Installation, Testing & Maintenance
- Partial discharge & Load Bank Testing
- Data Center Testing
- Annual Maintenance Contracts / Preventive maintenance



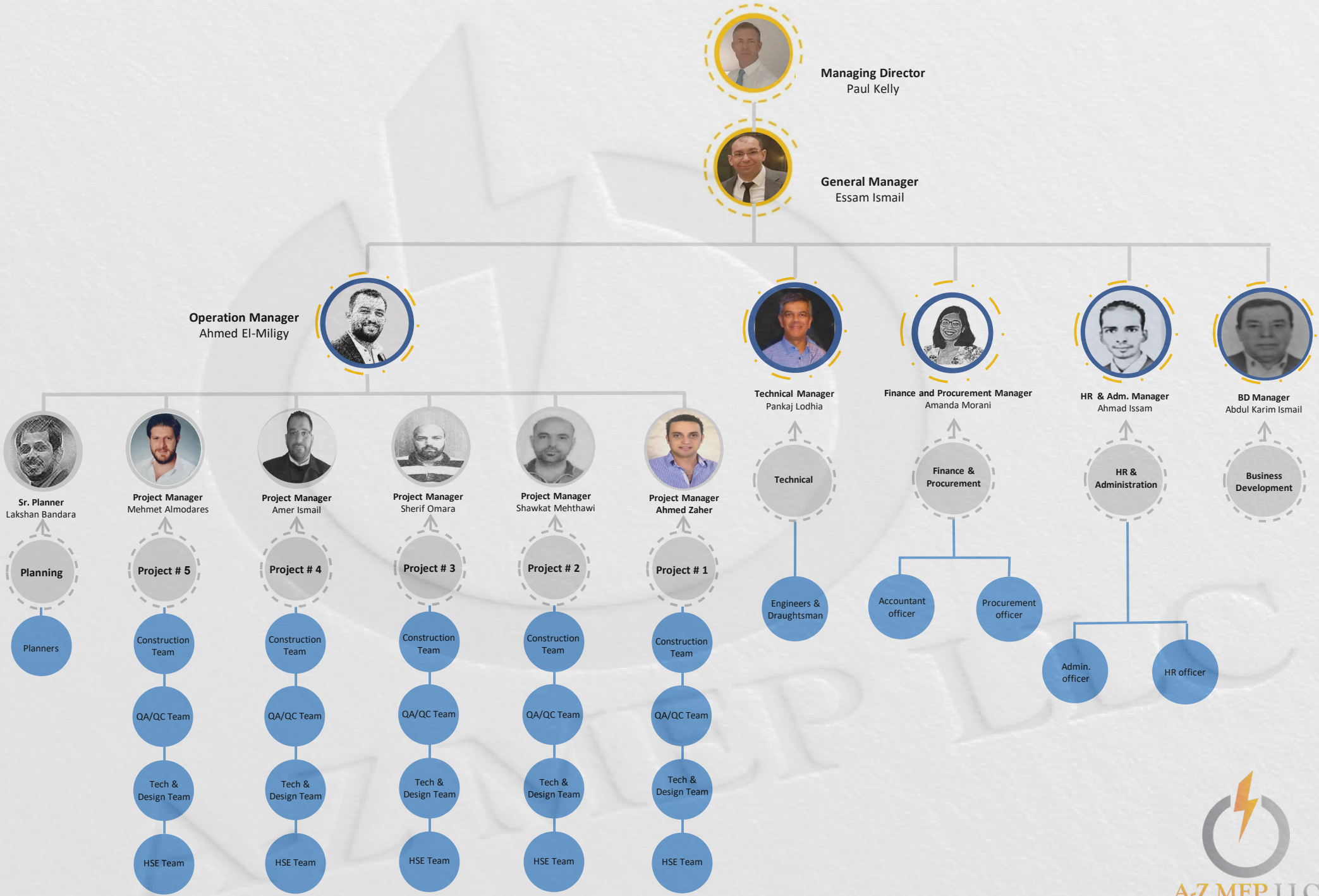
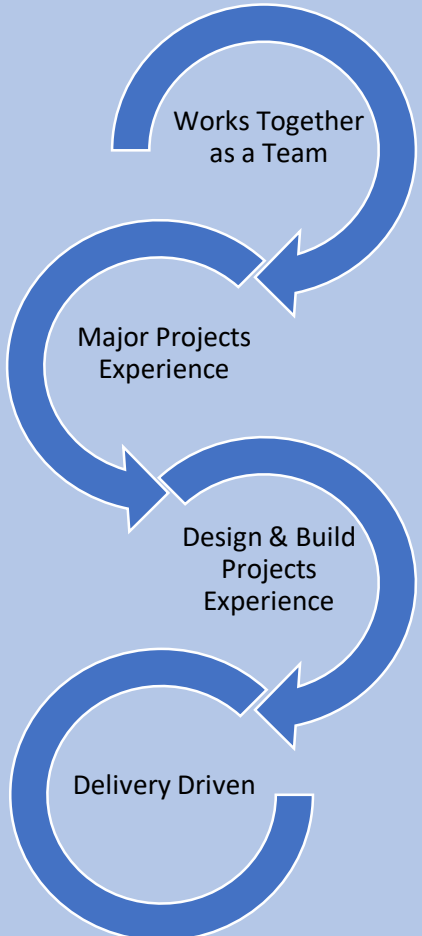


# Company Organization Chart



# COMPANY ORGANIZATION

## Key Personnel







## Project Reference





# Project Reference Company Roadmap

## AZMEP In Brief

- Al Bayt Stadium
- Lusail Stadium
- FIFA Arab Cup Stadiums
- FIFA World Cup Stadiums
- World Cup Fan Zones
- KATARA Towers



**July 2018**

Project: Al Bayt Stadium.  
Client: Supreme Committee.  
Scope: MEP Construction Management.



**April 2021**

Project: Lusail Stadium.  
Client: Supreme Committee.  
Scope: MEP Construction Management.



**Dec 2021**

Project: Al Bayt Stadium.  
Client: Supreme Committee.  
Scope: Defect Liability & Snags.



**May 2022**

Project: Katara Towers.  
Client: Katara Hospitality.  
Scope: MEP Construction Management.

**To 2023**



**Dec 2020**

Project: Al Bayt Stadium.  
Client: Supreme Committee.  
Scope: Snags & Handover.



**Aug 2021**

Project: FIFA Arab Cup 6 Stadiums.  
Client: FIFA/Match Hospitality .  
Scope: MEP Fit out Management.



**Feb 2022**

Project: World Cup 8 Stadiums.  
Client: FIFA/Match Hospitality .  
Scope: MEP Fit out Management.



**July 2022**

Project: World Cup Fan Zones.  
Client: Match Hospitality.  
Scope: MEP Fit out Management.



**Jan 2023**

Project: Mars Data Center (Dubai).  
Client: Quantum Switch.  
Scope: MEP Construction Management.





## Projects Gallery





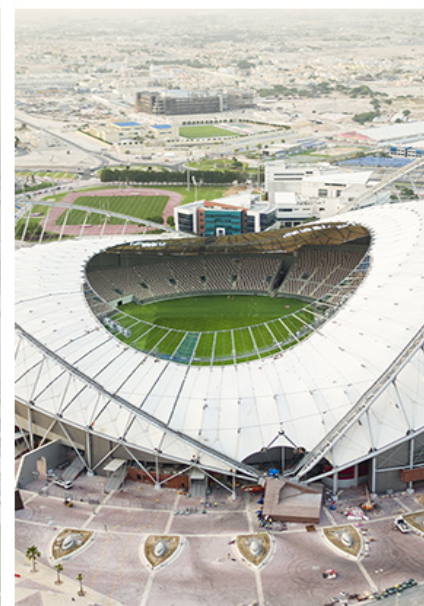
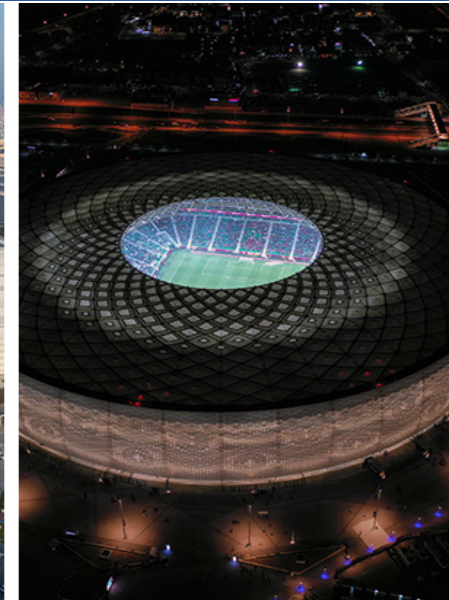
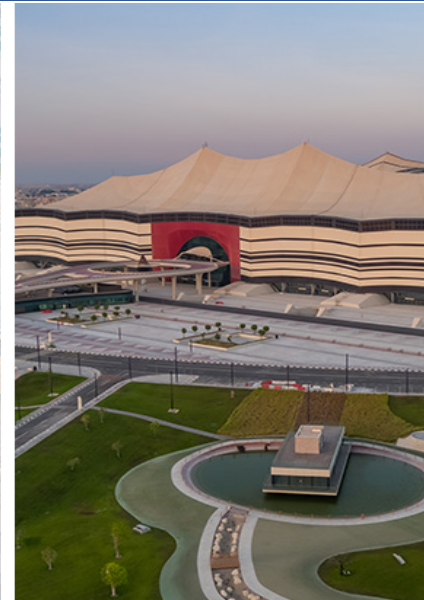
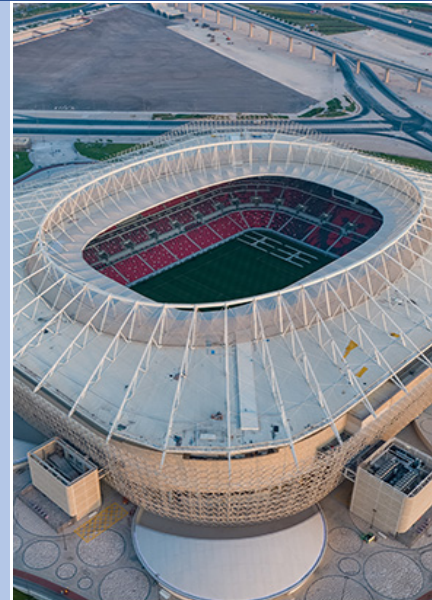
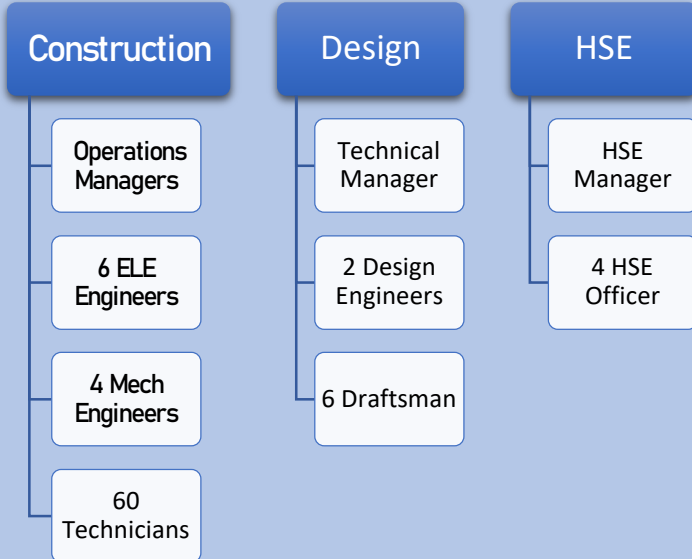
# FIFA World Cup 2022 Stadiums

MEP Service installation



FIFA WORLD CUP  
Qatar 2022

- **Scope:** Installation of MEP services for kitchens, Skybox rooms and hospitality rooms in the eight stadiums of Qatar World Cup 22.
- **Client:** GL Events & FIFA Match Hospitality
- **Duration:** 2022 – End of the tournament
- **AZMEP Team:**



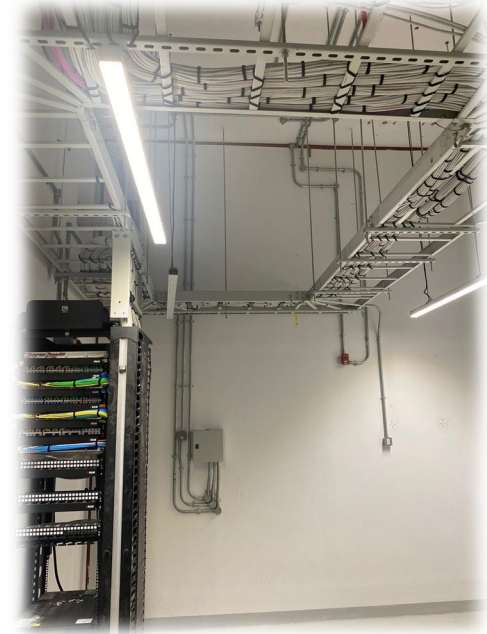
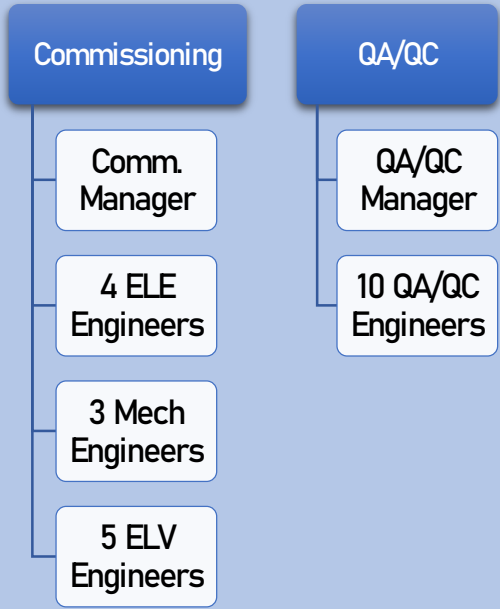


# KATARA TOWERS

MEP Project Management



- Two luxury hotels, plus apartments, office space, shops and restaurants.
- 211 meters (692 feet) tall and has 40 floors.
- Duration:** 2022 - Present
- AZMEP Team:**



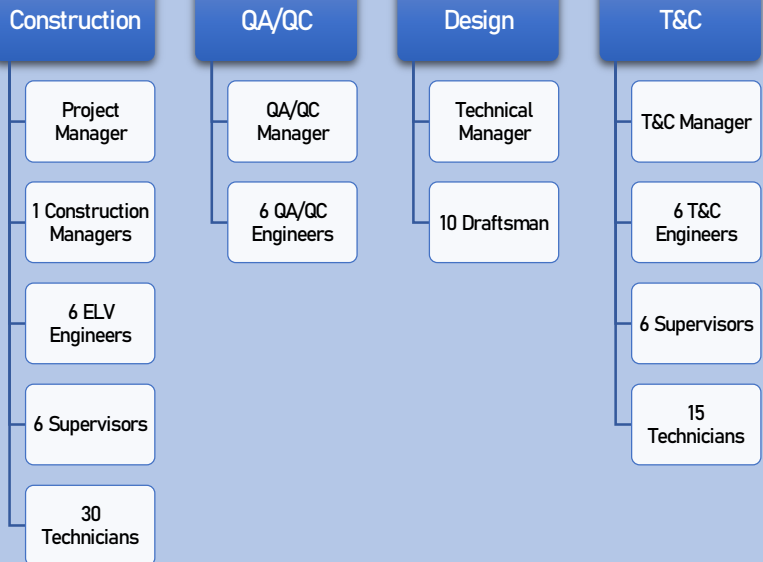


# Riyadh Metro Package 2 – Line 3

## MEP Project Management



- Total distance of 41.8Km.
- Line 3 is composed of 22 stations (including the iconic Downtown Station and Western Station), 2 depots, and 6 park & ride.
- **Duration:** 2022 – Present
- **AZMEP Team:**





# Fan Village World Cup 2022

MEP Service installation



- Lounges and entertainment area for FWC22 Fans.
- Cabin-style and casual camping accommodations.
- **Duration:** 2022 - Present
- **AZMEP Team:**

## Construction

Construction Managers

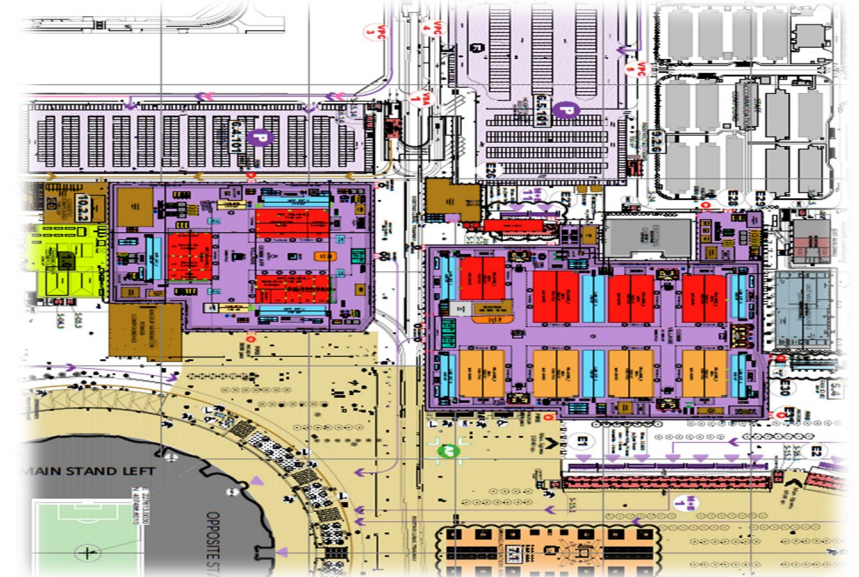
6 ELE Engineers

2 Mech Engineers

## Design

Technical Coordinator

8 Draftsman



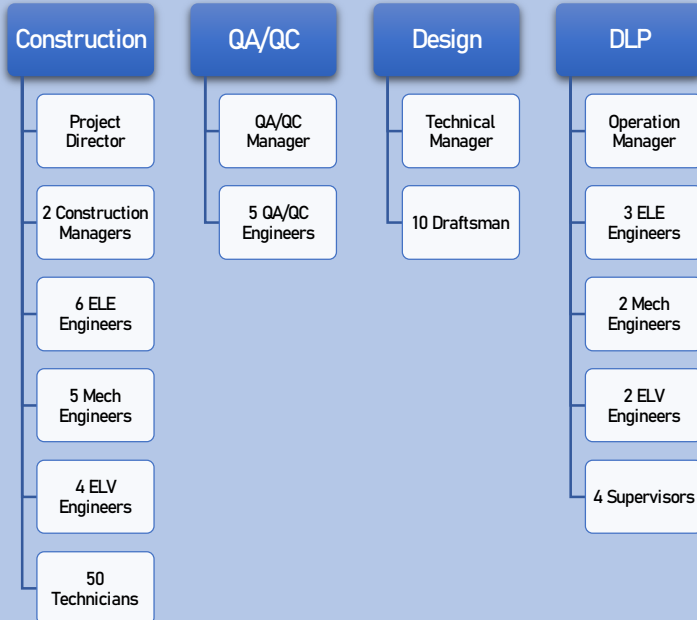


# AL BAYT STADIUM

## MEP Project Management



- Qatar FWC22 Stadium.
- 60,000 Audience Capacity.
- The stadium also includes 100+ luxurious hotel suites .
- **Duration:** 2018 - Present
- **AZMEP Team:**



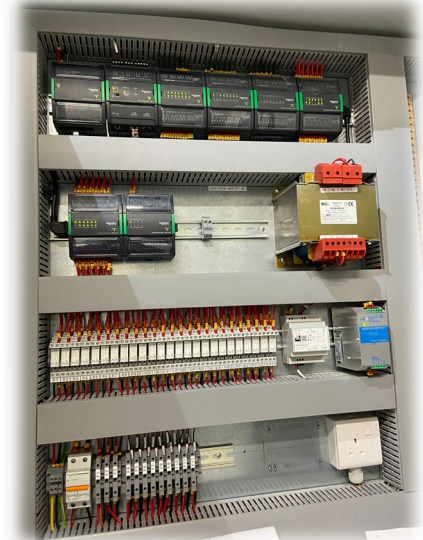
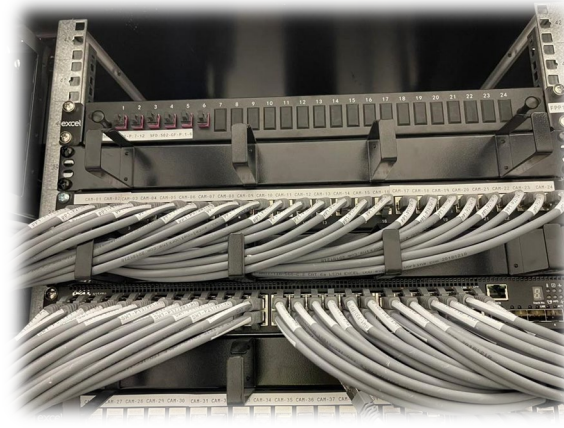
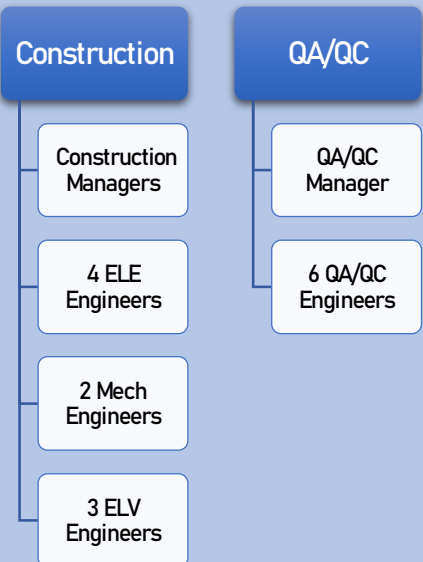


# LUSAIL STADIUM

MEP Project Management



- The biggest stadium in Qatar and one of eight stadiums being converted for the 2022 FWC.
- 80,000 Audience Capacity.
- The stadium also includes 100+ luxurious hotel suites .
- **Duration:** 2021 - 2022
- **AZMEP Team:**





# FIFA Arab Cup 2021 Stadiums

MEP Service installation



FIFA ARAB CUP  
QATAR 2021

- **Scope:** Installation of MEP services for kitchens, BOHs and hospitality rooms for six stadiums that hosted the Arab Cup
- **Client:** GL Events & FIFA Match Hospitality
- **Duration:** 2021 – End of the tournament
- **AZMEP Team:**



## Construction

Operations Managers

6 ELE Engineers

2 Mech Engineers

40 Technicians

## Design

Technical Manager

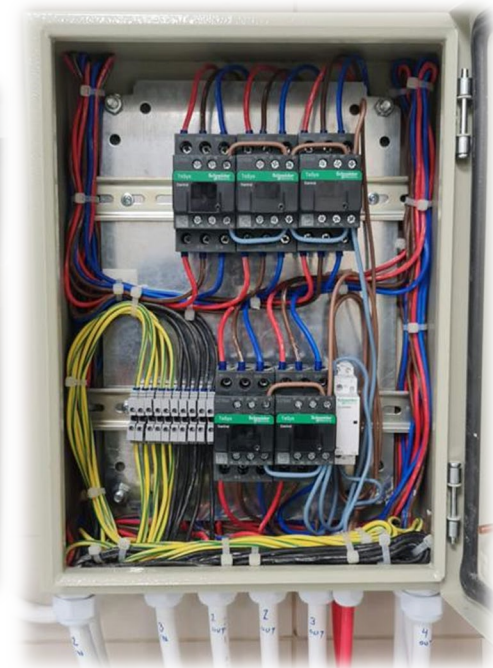
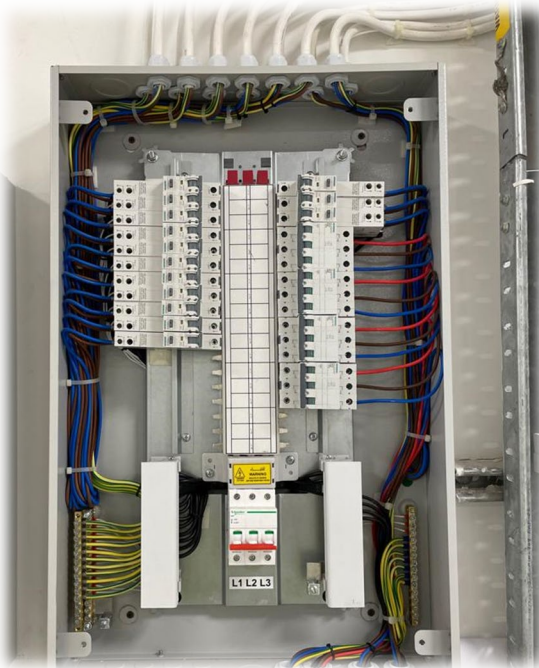
2 Design Engineers

3 Draftsman

## HSE

HSE Manager

2 HSE Officer







A-Z MEP LLC

**Certification**

A close-up photograph of a white, textured card with an embossed logo and text. The logo is a grey circle with a lightning bolt inside, and the text "A-Z MEP LLC" is embossed below it in a serif font. The lightning bolt is colored with a gradient from orange to yellow.

A-Z MEP LLC

# Quality, HSE and Environmental Management System

A-Z MEP is certified to :

ISO 9001:2015 for Quality Management System,

ISO 45001:2018 for Health and Safety Management System,

ISO 14001:2015 for Environmental Management System.



MANAGEMENT SYSTEM CERTIFICATE



### CERTIFICATE

This is to certify that the  
Quality Management System of

**AZMEP LLC**  
Business Centre, 2<sup>nd</sup> Floor, Office No.235 Co-Work 1, D-Ring Road,  
P.O. Box: 32522, Doha, Qatar.

has been found to comply with

**ISO 9001:2015**

This certificate is applicable to the following scope:  
Project management and event management services.

Certificate No :: BQSC202210046

Date of Initial Registration	26 October 2022
Surveillance Audit on/before	26 September 2023
Certificate Expiry	26 October 2023
Recertification due	25 October 2025

\*The scope is as per IAF Code 34, 35





Authorized Signatory *Kawthar*  
BQC ASSESSMENT PRIVATE LIMITED  
Website: www.bqcert.com, E-mail: info@bqcert.com

BQC Assessment Pvt. Ltd. is accredited by International Accreditation Services (IAS), United States of America vide MSCB Number 124. Accreditation details are available with IAS, (International Accreditation Service) Inc. USA, at www.iasonline.org. The validity of this certificate can be verified at www.bqcert.com or through info@bqcert.com. Address: 202, DLF Galleria, Mayapuri Vihar, Delhi - 110091. This certificate is the property of BQC Assessment Pvt. Ltd. and must be returned on request.

MANAGEMENT SYSTEM CERTIFICATE



### CERTIFICATE

This is to certify that the  
Environmental Management System of

**AZMEP LLC**  
Business Centre, 2<sup>nd</sup> Floor, Office No.235 Co-Work 1, D-Ring Road,  
P.O. Box: 32522, Doha, Qatar.

has been found to comply with

**ISO 14001:2015**

This certificate is applicable to the following scope:  
Project management and event management services.

Certificate No :: BESC202210026

Date of Initial Registration	26 October 2022
Surveillance Audit on/before	26 September 2023
Certificate Expiry	26 October 2023
Recertification due	25 October 2025

\*The scope is as per IAF Code 34, 35





Authorized Signatory *Kawthar*  
BQC ASSESSMENT PRIVATE LIMITED  
Website: www.bqcert.com, E-mail: info@bqcert.com

BQC Assessment Pvt. Ltd. is accredited by International Accreditation Services (IAS), United States of America vide MSCB Number 124. Accreditation details are available with IAS, (International Accreditation Service) Inc. USA, at www.iasonline.org. The validity of this certificate can be verified at www.bqcert.com or through info@bqcert.com. Address: 202, DLF Galleria, Mayapuri Vihar, Delhi - 110091. This certificate is the property of BQC Assessment Pvt. Ltd. and must be returned on request.

MANAGEMENT SYSTEM CERTIFICATE



### CERTIFICATE

This is to certify that the  
Occupational Health & Safety Management System of

**AZMEP LLC**  
Business Centre, 2<sup>nd</sup> Floor, Office No.235 Co-Work 1, D-Ring Road,  
P.O. Box: 32522, Doha, Qatar.

has been found to comply with

**ISO 45001:2018**

This certificate is applicable to the following scope:  
Project management and event management services.

Certificate No :: BOSC202210031

Date of Initial Registration	26 October 2022
Surveillance Audit on/before	26 September 2023
Certificate Expiry	26 October 2023
Recertification due	25 October 2025

\*The scope is as per IAF Code 34, 35





Authorized Signatory *Kawthar*  
BQC ASSESSMENT PRIVATE LIMITED  
Website: www.bqcert.com, E-mail: info@bqcert.com

BQC Assessment Pvt. Ltd. is accredited by International Accreditation Services (IAS), United States of America vide MSCB Number 124. Accreditation details are available with IAS, (International Accreditation Service) Inc. USA, at www.iasonline.org. The validity of this certificate can be verified at www.bqcert.com or through info@bqcert.com. Address: 202, DLF Galleria, Mayapuri Vihar, Delhi - 110091. This certificate is the property of BQC Assessment Pvt. Ltd. and must be returned on request.





## Company Policy



# Quality Policy



**A-Z MEP** is committed to meeting all the requirements of its client and regulatory bodies at all times and at minimal cost. All employees are responsible for the quality of work carried out on services and performance. Education and training have played an important role in supporting the quality system by ensuring that all employees are aware of their contribution, and the aim of quality improvement. In summary, the quality policy is to:

- Know all client's requirements and expectations
- Meet those requirements and expectations at all times
- Do everything right first time.



## QUALITY POLICY

**PERFECT TEAMWORK TO PROVIDE HIGH QUALITY SERVICES TO OUR VALUABLE CUSTOMERS AS PER THEIR REQUIREMENTS ON TIME, EVERY TIME**

### OBJECTIVES

- *Quality checking at every stage.*
- *To become Zero complaint organization on our services.*
- *Immediate action upon customer complaints within 24 hours.*
- *Adoption of update know how for the enhancement of performance.*
- *To create and maintain a culture of quality within the group.*
- *To ensure that all our employees are trained in quality assurance and that this training is ongoing at all levels.*
- *To meet all legal requirements.*
- *To provide the resources necessary to achieve the required level of quality.*
- *To provide documentary evidence of all quality control measures.*
- *To continually review, improve and implement quality control and best practice procedures.*
- *To seek feedback from our clients as to the level of quality delivered.*



GENERAL MANAGER





# Health & Safety Policy



**A-Z MEP** is committed to policy of safe working conditions and practices, for all persons employed upon the project sites and therefore necessary precautions are taken to prevent adverse effects on its employees, its equipment and the physical environment in which its activities are carried out.

This commitment to safety is communicated to all employees and its subcontractors by prominent display on the project sites.

It is the responsibility of all employees to understand their role in fulfilling this policy and follow the safety instructions and guidelines for the overall safety and welfare of all.



**A-Z MEP LLC**

## HEALTH & SAFETY POLICY

**WE** are committed to comply with ISO 45001:2018 Health & Safety Management System, ensuring all work activities are carried out safely, with all possible measures taken to remove / reduce risks to the health, safety and welfare of workers, sub-contractors, authorized visitors, and anyone else who may be affected by our operations.

### **To ensure compliance, we shall;**

- Provide safe working environment, plant, tools and substances in safe condition to the employees and sub-contractors.
- Ensure information, instruction, training and supervision is provided to every level that is necessary to ensure each worker is safe from injury and risk to health and safety in the workplace.
- Provide adequate facilities for the welfare of workers both at work place and off site.
- Conduct awareness among workers that each one is responsible for ensuring their own personal health and safety, (such as following safe work procedures, wearing personal protective equipment etc.) and that of others in the workplace.
- Continually improve our systems and procedures and look for areas in which we can improve our performance through effective safety management.

This policy applies to all business operations and functions, including those situations where workers are required to work off-site.



GENERAL MANAGER



# Environmental Policy



**A-Z MEP** is committed to ensure a sustainable future for the region by embracing new technologies and committing to national and international standards.

As a founder member of the Emirates Green Buildings BK Gulf, has in recent years, undergone several step changes in environmental and sustainable innovations and working practices, new technologies, developing client and main contractor partnerships and understanding the key environmental sustainable impacts within the region.



## ENVIRONMENTAL POLICY

**WE** believe it has an important duty to ensure good environmental performance in all its business operations and to provide the necessary organization, commitment and training to fulfil this obligation. The senior management firmly believes in, and is committed to monitoring and improving environmental performance, pollution prevention and environmental protection.

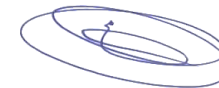
### **WE SHALL ACHIEVE THESE AIMS THROUGH;**

- Incorporating environmental responsibility into all business operations by planning environmental protection, reviewing and developing policy, by setting targets and reviewing and auditing performance.
- Utilizing the best available techniques to comply with the requirements of existing and future legislation and encouraging those working on our site to meet the same standards.
- Implementing a systematic waste minimization programme to achieve objectives and targets to reduce waste.
- Pursuing continuous improvement in environmental performance, where reasonably practicable, by setting objectives and targets, especially in reducing energy and water consumption and improving solid and liquid waste management methods.
- Being committed to maintaining effective communication systems on environmental matters through training and improved awareness.

All employees have responsibilities for policy implementation by participating and contributing to its success through their actions and suggestions.



GENERAL MANAGER





# THANK YOU

**Head Office:**  
133 Register 02, 1st Floor, Regus Business Centre,  
D Ring Road  
Doha, Qatar  
**Tel :** +974 4423 1374  
**Fax :** +974 4423 1374  
**P.O. Box:** 32522

**KSA Branch:**  
Building no.23, Nakhla Street, Ishbiliyah  
Dist. Riyadh 13226  
Riyadh, KSA  
**Tel :** +966 54 261 3424  
**Fax :** +966 13 843 1120  
**P.O. Box:** 32247

**E-mail:** [info@azmep-qa.com](mailto:info@azmep-qa.com)  
**Web:** [www.Azmep-qa.com](http://www.Azmep-qa.com)

## A-Z MEP LLC

NOTHING IS IMPOSSIBLE



A-Z MEP LLC